

VAC2/S-15E & VAC1/S-15E

15A, 1.6kW-4kW, 110V - 230V
Single Phase Switched Fan Controller

CONTACT US:

☎ 0044 (0) 1704-516 501
✉ enquiries@united-automation.com
🌐 www.united-automation.com



KEY FEATURES:

- ✓ Variable 0-98% output for precision control
- ✓ Minimum set speed adjuster for motor speed management
- ✓ Single-hole fixing for easy installation
- ✓ Rugged and compact design for durability
- ✓ Large TRIAC for inrush protection
- ✓ Integral R-C snubber network for enhanced control

Maximise control and reliability with our Variable Phase-Angle Regulators. These enclosed units are robust and compact, catering to 230V or 110V applications, handling up to 15A single-phase mains-driven inductive loads, including induction motors, fans, and pumps. You'll enjoy precise voltage adjustments from zero to maximum and added flexibility with an integrated OFF switch.

Product Highlights:

- **Complete Voltage Control:** Achieve full control with adjustable voltage outputs to meet the specific demands of your equipment.
- **Minimum Set Speed Adjuster:** Prevent motors from running too slowly by using the rear adjuster to set a minimum output voltage level, giving you control over motor speed.
- **High Inrush Current Handling:** The large triac ensures the unit can effectively manage high inrush currents, delivering an extra safety margin for industrial settings.
- **Integrated R-C Snubber Network:** Enhance the control of inductive loads with the integrated RC snubber network, improving the reliability of your setup.
- **Adhesive-Backed Silver Label and Hairline Knob:** These practical extras simplify installation and make front panel mounting a breeze.

TECHNICAL SPECIFICATIONS

Maximum rms on-state current	15A
Minimum operating current	200mA
Triac limiting rms on state current	25A
Peak one cycle surge @ 10mS	250A
Peak one cycle surge HS model @ 10mS	300A
I ² t for fusing	112 A ² s
Isolation voltage	2500V rms
Maximum recommended unit temperature	70°C
Maximum cable temperature	105°C
Maximum recommended unit load at 20°C ambient, (without extra heatsink)	10A
Maximum recommended unit load at 40°C ambient, (without extra heatsink)	5A
Mains supply +/-10% @ 50/60Hz	110 or 230V ac

APPLICATIONS:

- Perfect for a variety of applications, including:
- Simple Mains-Driven Motors.
 - Fans.

YOU MUST READ THIS BEFORE INSTALLATION

 ELECTRICAL SAFETY	 INSTALLATION REQUIREMENTS	 USER RESTRICTIONS	 USAGE ENVIRONMENT	 HOT SURFACE WARNING
WARNING: RISK OF ELECTRIC SHOCK Always consult the Installation & Maintenance Instructions before connecting this product to the power supply. WARNING: Disconnect Power Before Servicing Ensure the electrical supply is safely disconnected before connecting to any supply, load, or control terminals.	WARNING: Installation by Qualified Personnel Only This product must only be installed or fitted by a competent, qualified installer familiar with the relevant electrical standards and installation practices.	WARNING: Not for Use by Vulnerable Individuals This product is not intended for use by persons (including children) with reduced physical, sensory or mental capabilities, or lack of experience and knowledge, unless they are supervised or instructed by a person responsible for their safety.	WARNING: Industrial Use Only This is an industrial-grade product and is not intended for household use.	WARNING: Hot Surfaces On certain models, surfaces marked with this symbol become hot during use. Avoid direct contact and follow all thermal safety precautions.

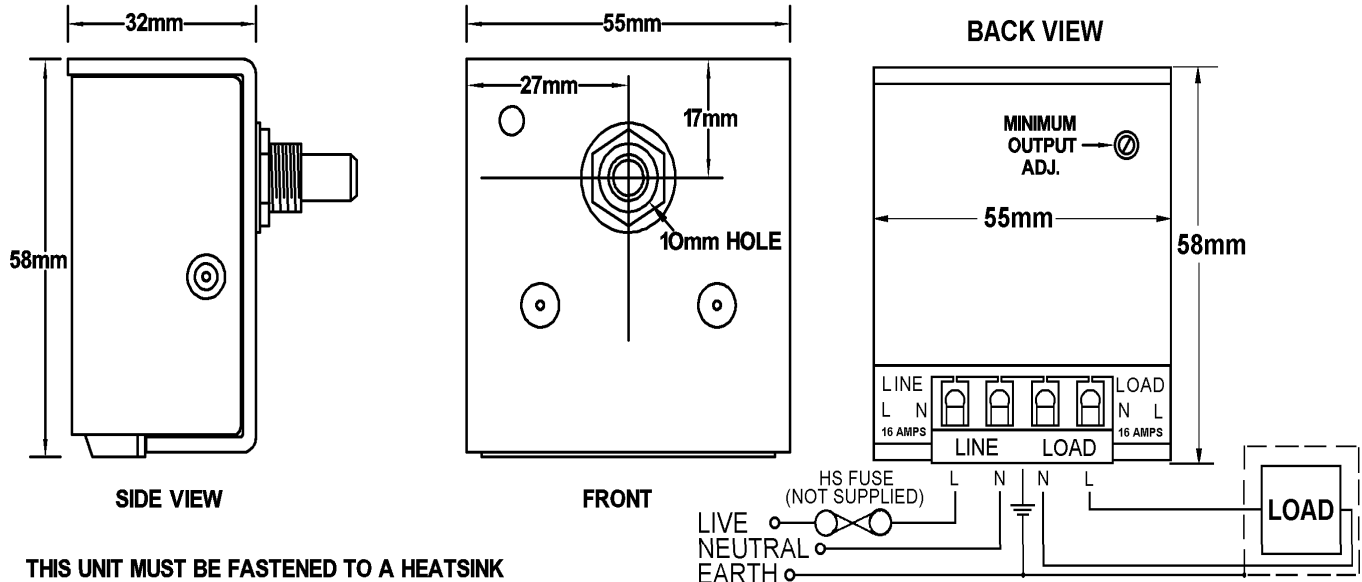
VAC2/S-15E & VAC1/S-15E

15A, 1.6kW-4kW, 110V - 230V

Single Phase Switched Fan Controller

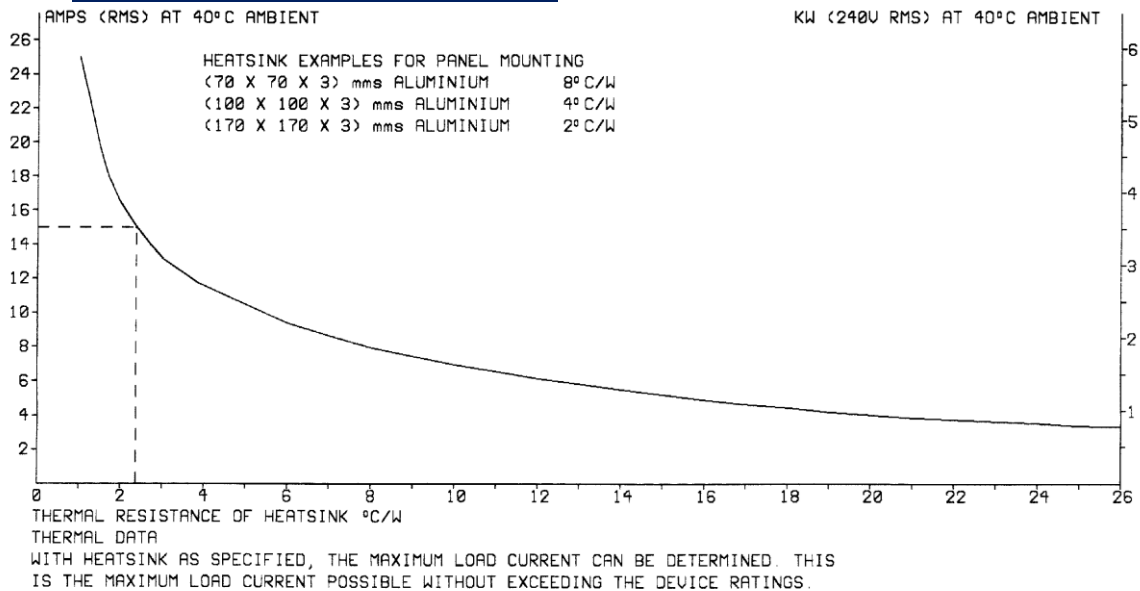
INSTALLATION

DIMENSIONS & CONNECTIONS



THIS UNIT MUST BE FASTENED TO A HEATSINK
RATED AT 2 °C/W FOR 15A OPERATION.
HEATSINK PASTE ESSENTIAL
FOR GOOD THERMAL CONTACT.

COOLING REQUIREMENTS



VAC2/S-15E & VAC1/S-15E

15A, 1.6kW-4kW, 110V - 230V

Single Phase Switched Fan Controller

RECOMMENDATIONS

FUSING

It is recommended to use semiconductor (fast acting) type fuses or circuit breakers (Semiconductor - MCB) for unit protection. On initial switch on some loads may need an increased Factor of Safety (F of S) for unit and/or device protection. See SRA datasheet for information.

DOCUMENTS

Other documents available on request, which may be appropriate for your application:

Code	Identity	Description
X10229	RFI	Filter recommendations: Addressing the EMC Directive
X10213	ITA	Interaction: Uses for phase angle and for burst fire control
X10255	SRA	Safety Requirements: Addressing the Low Voltage Directive (LVD) including, Thermal Data/Cooling, Live Parts Warning, Earthing Requirements and Fusing Recommendations

It is recommended that installation and maintenance of this equipment should be done with reference to the current edition of the I.E.T. regulations (BS7671) by suitably qualified/trained personnel. The regulations contain important requirements regarding the safety of electrical equipment. For International standards refer STANDARDS on D of C.

OPTIONAL EXTRAS

Product Code	Product Description
N30001	Control Knob RN-113B
Z01062	Heatsink Compound Syringe (Must be applied while fitting)
A-EN2010-16-F	16A 10 series EMI Single phase Chassis Mount filter

PRODUCT CODE AND RELATED PRODUCT CODE

Product Code	Product Description
A72160	VAC1/S-15E-15A – 1.6kW 110V fan control enclosed – switched
A72226	VAC2/S-15E-15A – 4kW 230V fan control enclosed – switched



BMF House - Wight Moss Way,
Southport Business Park
Southport PR8 4HQ
ENGLAND, UNITED KINGDOM

Contact Us:

☎ 0044 (0) 1704-516 501
✉ enquiries@united-automation.com
🌐 www.united-automation.com

