

X10532

Variable AC Voltage Regulators

EVR Series

25A, 230V

AC Phase Angle / Burst Fire Power Regulator Stack



CONTACT US:

☎ 0044 (0) 1704-516 501

✉ enquiries@united-automation.com

🌐 www.united-automation.com

KEY FEATURES:

- ✓ **Single Entry Cable Gland:** Simplifies installation.
- ✓ **Massive 0.3°C/Watt Earthed Heatsink:** Ensures efficient heat dissipation.
- ✓ **Control Options:** Available in phase angle or burst firing versions.
- ✓ **High-Speed Semiconductor Fuses:** Enhance safety and reliability.
- ✓ **Easy Installation:** Designed for straightforward setup.
- ✓ **Optional Input Control:** Provides flexibility in control methods.

APPLICATIONS:

The EVR Thyristor stacks are perfect for controlling **heaters, ovens, dryers, air curtains, hot plates, and heating and ventilation systems.**

The SCR solid-state phase angle power handling provides smooth proportional control for **diverse industrial processes, including furnaces, electroplating, controlled rectifiers, and transformers.**

The **EVR range** of Thyristor stacks is designed for single-phase 230V applications, offering robust control of loads up to 25A with various signal control options. These stacks are customisable to suit the final load with phase angle and burst firing control options. Each EVR thyristor stack comes equipped with high-speed semiconductor fuses and an integral heatsink for reliable performance.

Optimise your industrial processes with the reliable and efficient control offered by the EVR range of Thyristor stacks. Perfect for various heating and ventilation applications, these stacks ensure smooth proportional control, enhancing your system's performance and longevity.

TECHNICAL SPECIFICATIONS

Mains Voltage	230V AC $\pm 10\%$ -6%
Signal Span Minimum	0-5V DC
Signal Span Maximum	0-25V DC
Signal Zero Offset	0-30% of Span
Signal Input Resistance	5000 ohms $\pm 20\%$
Manual Potentiometer	2K, 5K, or 10K
Soft Start Time Constant	0-20 seconds
Isolation Voltage	2500 Vrms
Auxiliary Output	5V DC
Triac Limiting RMS Current	26A
Peak Single Cycle Surge Current	250A
Max. Peak Voltage	600V
Current Rating	25A
Replacement Fuse	30A 660V SCR type
Max. Working Temperature	65°C operational
Storage Temperature	-20°C to +85°C

YOU MUST READ THIS BEFORE INSTALLATION

ELECTRICAL SAFETY	INSTALLATION REQUIREMENTS	USER RESTRICTIONS	USAGE ENVIRONMENT	HOT SURFACE WARNING
WARNING: RISK OF ELECTRIC SHOCK Always consult the Installation & Maintenance Instructions before connecting this product to the power supply. WARNING: Disconnect Power Before Servicing Ensure the electrical supply is safely disconnected before connecting to any supply, load, or control terminals.	WARNING: Installation by Qualified Personnel Only This product must only be installed or fitted by a competent, qualified installer familiar with the relevant electrical standards and installation practices.	WARNING: Not for Use by Vulnerable Individuals This product is not intended for use by persons (including children) with reduced physical, sensory or mental capabilities, or lack of experience and knowledge, unless they are supervised or instructed by a person responsible for their safety.	WARNING: Industrial Use Only This is an industrial-grade product and is not intended for household use.	WARNING: Hot Surfaces On certain models, surfaces marked with this symbol become hot during use. Avoid direct contact and follow all thermal safety precautions.

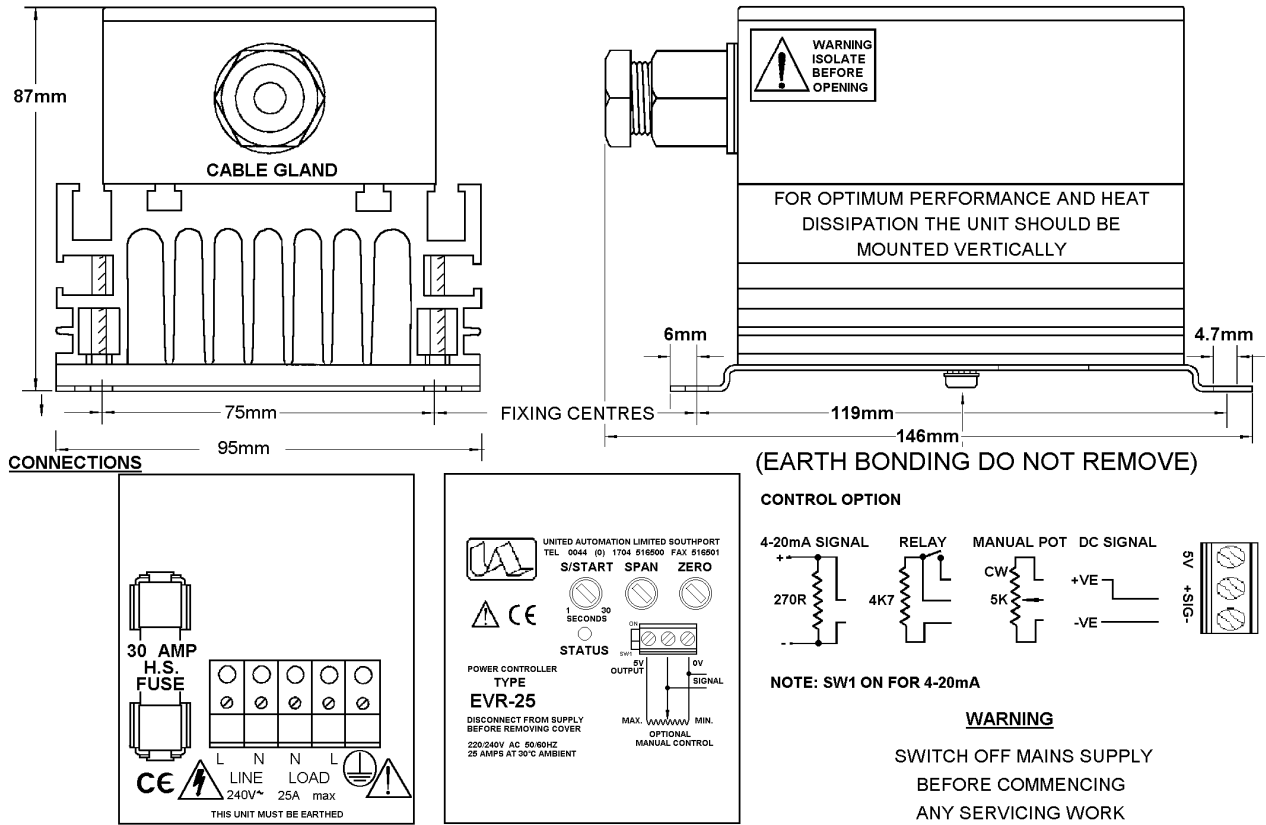
EVR Series

25A, 230V

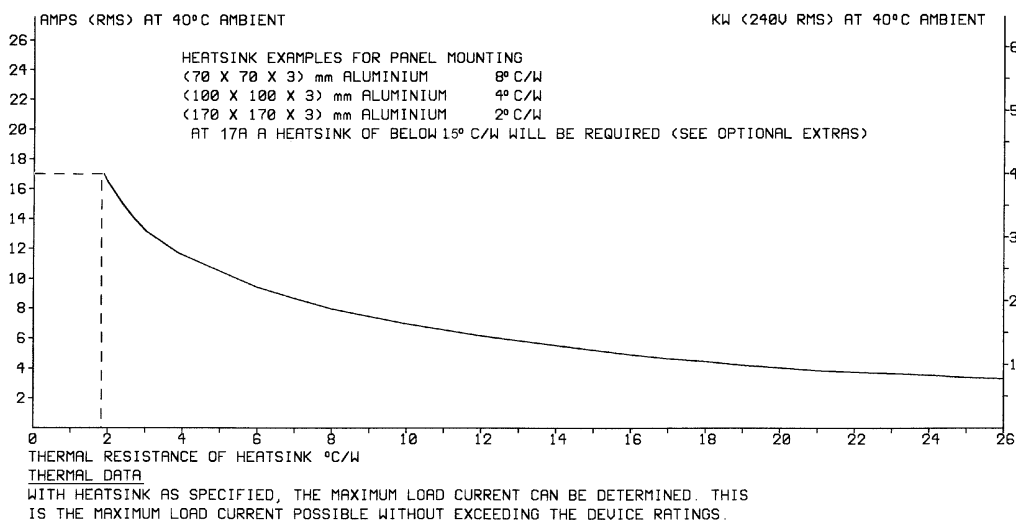
AC Phase Angle / Burst Fire Power Regulator Stack

INSTALLATION

DIMENSIONS & CONNECTIONS



Cooling Requirements



EVR Series

25A, 230V

AC Phase Angle / Burst Fire Power Regulator Stack

RECOMMENDATIONS

FUSING

A semiconductor, fast acting type fuse, is supplied as standard for unit protection. On initial operation, some loads may need an increased Factor of Safety (F of S) for unit and/or device protection. For spares or replacements contact our sales desk.

DOCUMENTS

Other documents available on request, which may be appropriate for your application:

Code	Identity	Description
X10229	RFI	Filter recommendations: Addressing the EMC Directive
X10213	ITA	Interaction: Uses for phase angle and for burst fire control
X10255	SRA	Safety Requirements: Addressing the Low Voltage Directive (LVD) including, Thermal Data/Cooling, Live Parts Warning, Earthing Requirements and Fusing Recommendations
X10322	ASC	AC Stack Specification and Application Datasheet
P01.1	COS	UAL Conditions of Sale

It is recommended that installation and maintenance of this equipment should be done with reference to the current edition of the I.E.T. regulations (BS7671) by suitably qualified/trained personnel. The regulations contain important requirements regarding the safety of electrical equipment. For International standards refer STANDARDS on D of C.

OPTIONAL EXTRAS

Product Code	Product Description
**	Single-phase EMI/RFI filter
**When ordering a filter match the current rating to the load size. Note: The filter must always be rated above the load rating.	

PRODUCT CODE AND RELATED PRODUCT CODE

Product Code	Product Description
A407222A	EVR 25A 230VAC Phase Angle Power Regulator
A407222B	EVR 25A 230VAC Burst Fire Power Regulator



BMF House - Wight Moss Way,
 Southport Business Park
 Southport PR8 4HQ
 ENGLAND, UNITED KINGDOM

Contact Us:
 ☎ 0044 (0) 1704-516 501
 ✉ enquiries@united-automation.com
 🌐 www.united-automation.com

