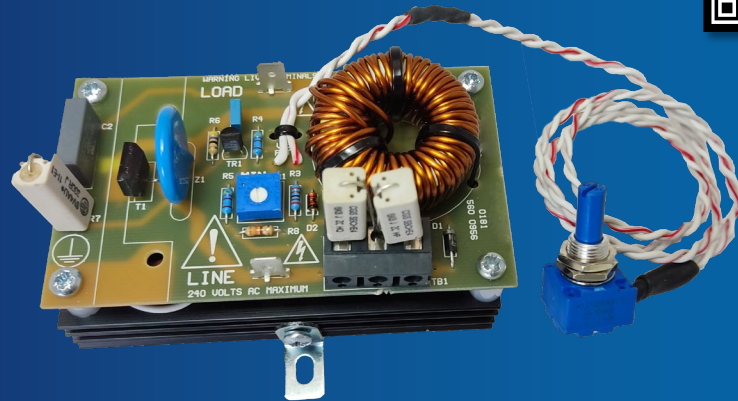


X10338

HALF WAVE VIBRATOR CONTROLLER | SINGLE PHASE

UV15/D

110V, 230V



#### CONTACT US:

☎ 0044 (0) 1704-516 501

✉ enquiries@united-automation.com

🌐 www.united-automation.com

#### KEY FEATURES:

- ✓ **Solid-State Reliability:** Ensures long-lasting, dependable performance.
- ✓ **Dual Voltage Compatibility:** Operates on both 110V and 240V AC supplies.
- ✓ **Simple Wiring:** Easy installation with minimal wiring requirements.
- ✓ **Adjustable Minimum Output:** Fine-tune the minimum output for precise control.
- ✓ **Energy Saving:** Designed to optimise energy consumption.

#### APPLICATIONS:

Ideal for controlling **vibrator coils**, the UV15/D is a versatile solution for applications requiring efficient, reliable power management.

The **UV15/D** is a robust single-phase half-wave controller designed for seamless operation on both 110V and 240V AC supplies. Featuring an integral high-current device, it ensures reliable performance across a range of applications. With a straightforward 2-wire connection plus Earth, installation is quick and easy. The output can be precisely adjusted using a 25k potentiometer, with a cermet mounted on the PCB for fine-tuning minimum settings.

The **UV15/D** is an efficient, easy-to-use controller that provides solid-state reliability and energy savings in a compact, dual-voltage design.

#### TECHNICAL SPECIFICATIONS

Supply	110 or 230Vac $\pm$ 10% @50/60hz
Unit RMS Current Rating	15A
Peak Single Cycle Surge Current	500A
Thyristor Limiting RMS Current	50A
L <sup>2</sup> t for Fusing	112A <sup>2</sup> s
Maximum Peak Voltage	1000V
Minimum Operating Current	200mA
Storage Temperature Range	0-85°C
Operating Temperature	0-65°C

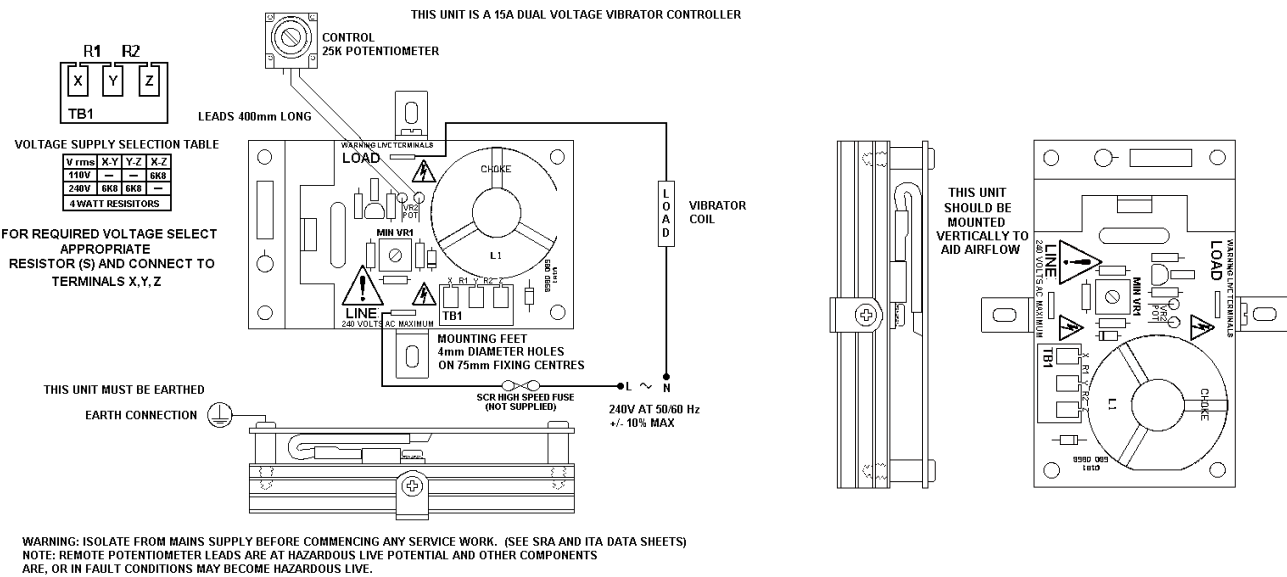
#### YOU MUST READ THIS BEFORE INSTALLATION

 ELECTRICAL SAFETY	 INSTALLATION REQUIREMENTS	 USER RESTRICTIONS	 USAGE ENVIRONMENT	 HOT SURFACE WARNING
<b>WARNING: RISK OF ELECTRIC SHOCK</b> Always consult the Installation & Maintenance Instructions before connecting this product to the power supply. <b>WARNING: Disconnect Power Before Servicing</b> Ensure the electrical supply is safely disconnected before connecting to any supply, load, or control terminals.	<b>WARNING: Installation by Qualified Personnel Only</b> This product must only be installed or fitted by a competent, qualified installer familiar with the relevant electrical standards and installation practices.	<b>WARNING: Not for Use by Vulnerable Individuals</b> This product is not intended for use by persons (including children) with reduced physical, sensory or mental capabilities, or lack of experience and knowledge, unless they are supervised or instructed by a person responsible for their safety.	<b>WARNING: Industrial Use Only</b> This is an industrial-grade product and is not intended for household use.	<b>WARNING: Hot Surfaces</b> On certain models, surfaces marked with this symbol become hot during use. Avoid direct contact and follow all thermal safety precautions.

# UV15/D

110v, 230v

## INSTALLATION



## RECOMMENDATIONS

### FUSING

It is recommended to use semiconductor (fast acting) type fuses or circuit breakers (Semiconductor - MCB) for unit protection. On initial 'switch on' some loads may need an increased factor of safety (F of S) for unit and/or device protection. (See SRA Datasheet for further information).

### CE Marking

This product family carries a "CE" marking. These burst firing type controllers do not require a filter. For information see recommendation section and contact our sales desk. See the Declaration of Conformity.

## DOCUMENTS

Other documents available on request, which may be appropriate for your application:

Code	Identity	Description
X10229	RFI	Filtering Recommendations: Addressing the EMC Directive
X10213	ITA	Interaction: Uses for phase angle and for burst fire control
X10255	SRA	Safety Requirements: Addressing the Low Voltage Directive (LVD) including, Thermal Data/Cooling, Live Parts Warning, Earthing Requirements and Fusing Recommendations
P01.1	COS	UAL Conditions of Sale

It is recommended that installation and maintenance of this equipment should be done with reference to the current edition of the I.E.T. regulations (BS7671) by suitably qualified/trained personnel. The regulations contain important requirements regarding the safety of electrical equipment. For International standards refer STANDARDS on D of C.

## PRODUCT CODE AND RELATED PRODUCT CODE

Product Code	Product Description
A52415	UV15/D



BMF House - Wight Moss Way,  
Southport Business Park  
Southport PR8 4HQ  
ENGLAND, UNITED KINGDOM

Contact Us:  
01 0044 (0) 1704-516 501  
enquiries@united-automation.com  
www.united-automation.com

