

X10245

TRIGGER MODULES | SINGLE PHASE

# STOM2

Microprocessor-Based 10V to 440V  
Dual Mode Trigger Module

## CONTACT US:

☎ 0044 (0) 1704-516 501

✉ enquiries@united-automation.com

🌐 www.united-automation.com



## KEY FEATURES:

- ✓ **Energy Saving:** Reduces power consumption with efficient control.
- ✓ **Dual Mode Control:** Select between phase-angle and burst-firing.
- ✓ **Soft-Start:** Adjustable from 0-30 seconds for gentle startup.
- ✓ **Isolated Inputs:** Accepts 0-5V DC or 4-20mA signals.
- ✓ **Load Status Indicator:** For real-time feedback.
- ✓ **Rugged & Compact:** Built for durability in harsh environments.

## APPLICATIONS:

- Ovens
- Moulders
- Dryers
- Ideal for heating loads with low resistance when cold

The **STOM2** is a versatile microprocessor-controlled trigger module, capable of driving most power thyristors. It offers two modes of control: **phase-angle** and **burst-firing**. This makes it suitable for applications requiring both smooth and rapid power delivery, such as **soft-starting** in phase-angle mode, with an automatic switch to burst-fire at a preset control signal level. The STOM2 supports inputs from **0-5V DC** or **4-20mA**, making it compatible with a variety of controllers.

The **STOM2** is perfect for resistive and inductive loads, offering reliable performance for industrial applications.

## TECHNICAL SPECIFICATIONS

Mono-link fuse	F100mA (HRC)
Soft Start	1-30 sec
Max. electrical isolation	4kV ac
Power consumption	1.2W
Trigger output rating	1A
Auxiliary output	5V dc
Gate terminals	6.3mm x 0.8mm
Min. line voltage	5V ac
Max. line voltage	440V ac
Control signals	0-5V dc & 4-20mA
Operating frequency	50 to 60 Hz +/- 5%
Supply voltage	10-18V ac @ 75mA
Operating temp	0 to 65°C
Storage temp	0 to 85°C



BMF House - Wight Moss Way,  
Southport Business Park  
Southport PR8 4HQ  
ENGLAND

united automation unitedautomationltd UA\_Limited

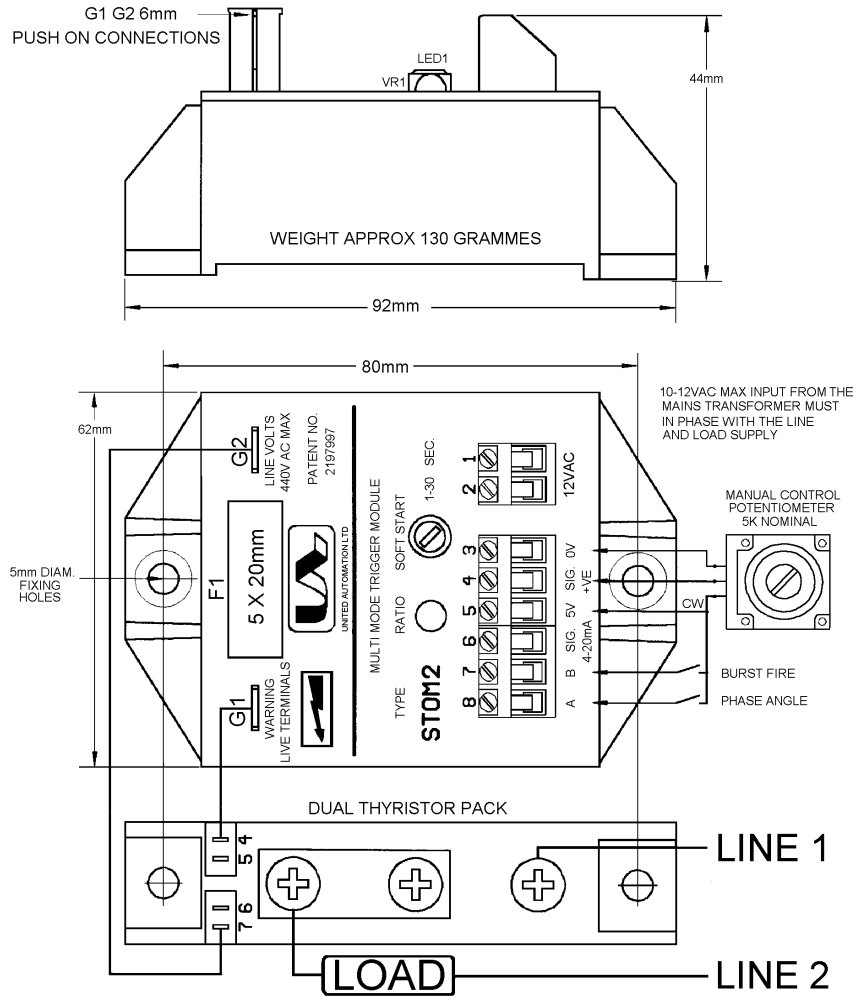


# STOM2

10V to 440V

Microprocessor-Based Dual Mode Trigger Module

## INSTALLATION



BMF House - Wight Moss Way,  
Southport Business Park  
Southport PR8 4HQ  
ENGLAND

united automation

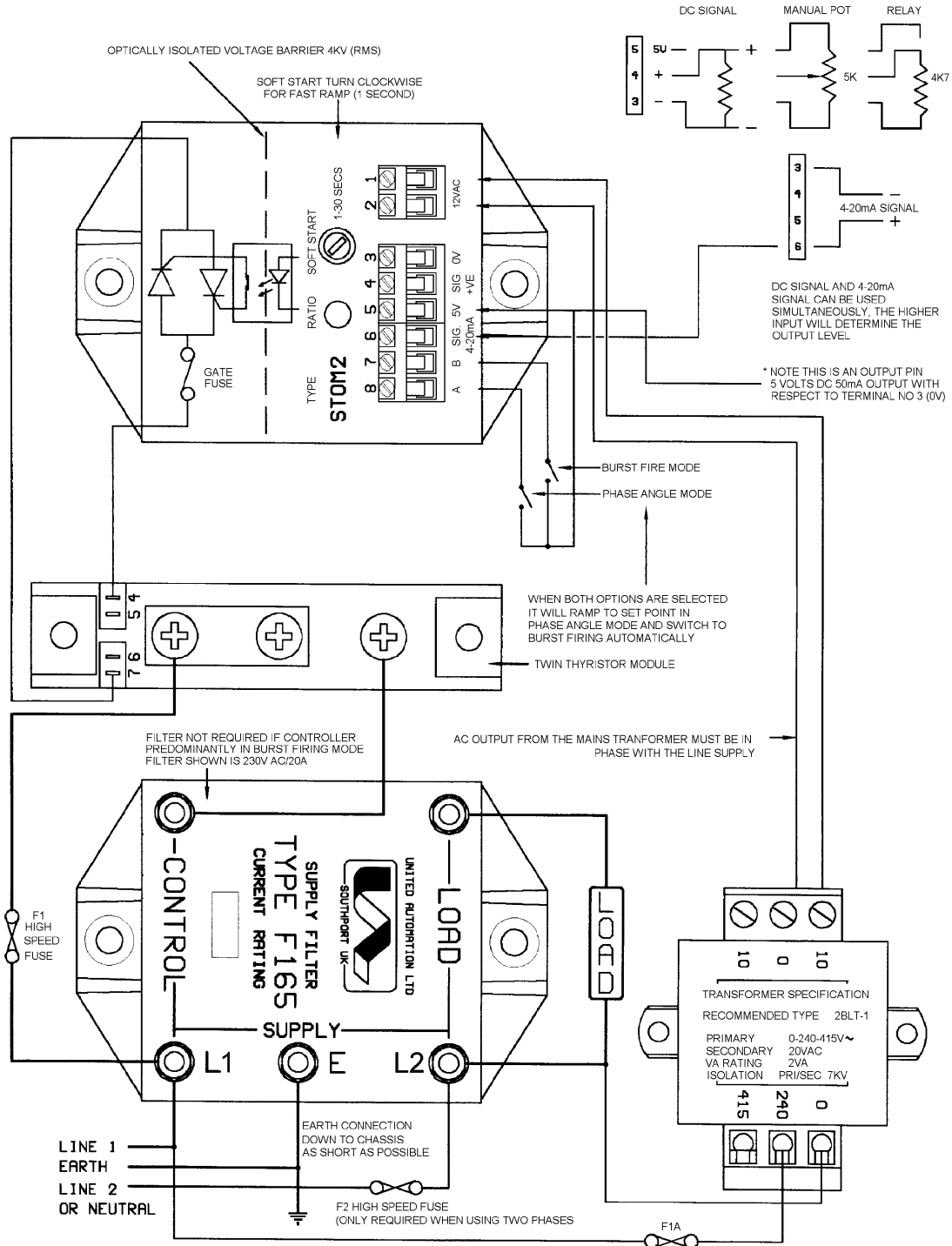
unitedautomationltd UA\_Limited



# STOM2

10V to 440V

Microprocessor-Based Dual Mode Trigger Module



MATCH MAINS SUPPLY FILTER TO THE SUPPLY VOLTAGE AND MAX. LOAD CURRENT IN ORDER TO COMPLY WITH BSEN 550081-2 WHEN USED IN PHASE ANGLE MODE



BMF House - Wight Moss Way,  
Southport Business Park  
Southport PR8 4HQ  
ENGLAND

united automation

unitedautomationltd UA\_Limited



# STOM2

10V to 440V

Microprocessor-Based Dual Mode Trigger Module

## RECOMMENDATIONS

### FUSING

It is recommended that semiconductor, fast-acting type fuses or circuit breakers (Semiconductor-MCB) be used for unit protection. On initial operation some loads may need an increased Factor of Safety (F of S) for unit and/or device protection. See the SRA datasheet for further information.

## DOCUMENTS

Other documents available on request, which may be appropriate for your application:

Code	Identity	Description
X10229	RFI	Filter recommendations: Addressing the EMC Directive
X10213	ITA	Interaction: Uses for phase angle and for burst fire control
X10255	SRA	Safety Requirements: Addressing the Low Voltage Directive (LVD) including, Thermal Data/Cooling, Live Parts Warning, Earthing Requirements and Fusing Recommendations
X10378	ILR	Inductive loads remedy sheet for use with Phase angle controllers
P01.1	COS	UAL Conditions of Sale

It is recommended that installation and maintenance of this equipment should be done with reference to the current edition of the I.E.T. regulations (BS7671) by suitably qualified/trained personnel. The regulations contain important requirements regarding the safety of electrical equipment. For International standards refer STANDARDS on D of C.

## OPTIONAL EXTRAS

Product Code	Product Description
A403001	Manual (5K) Potentiometer Knob and Leads
T30201	Supply Transformer

United Automation can also supply EMI/EMC Filters, thyristor module, fuses.  
For more details, please contact us [enquiries@united-automation.com](mailto:enquiries@united-automation.com)

## PRODUCT CODE AND RELATED PRODUCT CODE

Product Code	Product Description
A34512	STOM2 Microprocessor-Based Dual Mode Trigger Module



BMF House - Wight Moss Way,  
Southport Business Park  
Southport PR8 4HQ  
ENGLAND