

X10356

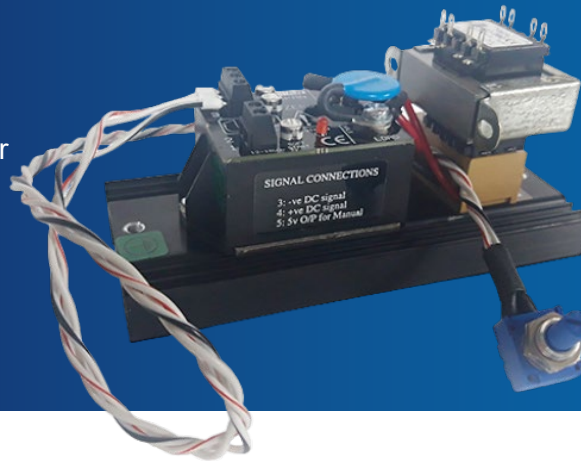
HALF WAVE VIBRATOR CONTROLLER | SINGLE PHASE | PHASE TO PHASE



# UV11/D

230v, 415v

Dual Voltage Half-Wave Vibrator Controller



## CONTACT US:

☎ 0044 (0) 1704-516 501

✉ enquiries@united-automation.com

🌐 www.united-automation.com

## KEY FEATURES:

- ✓ **Solid-State Reliability:** Ensures consistent, long-term operation without mechanical wear.
- ✓ **Built-In Heatsink:** Provides efficient cooling to maintain optimal performance.
- ✓ **Simple Wiring:** Streamlined installation process with minimal wiring complexity.
- ✓ **Rugged and Compact Design:** Durable construction in a space-saving form factor.
- ✓ **Energy Saving:** Designed to optimize power usage, reducing operational costs.

## APPLICATIONS:

The UV11/D is ideal for controlling most half-wave AC vibrator loads, including bowl feeders and linear screen vibrators.

Its robust design and adaptability make it a perfect choice for industrial settings requiring precise vibration control.

The UV11/D is a versatile dual-voltage half-wave vibrator controller designed for optimal performance in industrial applications. It can be configured to operate at either 240V or 415V AC line voltage, making it suitable for a wide range of environments. The controller is equipped with a 26A high-current device and an RC snubber network, ensuring maximum efficiency and reliability when handling inductive loads. Whether you need automated control via voltage or current signals, or prefer manual adjustment with a potentiometer, the UV11/D offers flexible control options tailored to your needs.

The UV11/D Dual Voltage Half-Wave Vibrator Controller is the perfect solution for managing vibration in industrial applications, combining flexibility, reliability, and energy efficiency in a rugged, compact package.

## TECHNICAL SPECIFICATIONS

Signal span minimum	0-5V dc
Signal span maximum	0-25V dc
Signal zero offset	0-30% of span
Signal input resistance	5000 ohms ± 20%
Manual potentiometer	2K, 5K or 10K
L <sup>2</sup> t for fusing (10m sec)	250 A <sup>2</sup> s
Soft start time constant	0-20 seconds
Isolation voltage	2500 Vrms
Max. working temperature	65°C operational
AC input power (1&2)	12 to 18V ac @ 65mA
Auxiliary output (5)	5Vdc
Triac limiting RMS current	26A
AC line voltage 50/60Hz	240V or 415V
Peak single cycle surge current	250A
Power consumption	1.7W
Max. peak voltage	600V
Current rating	11A
Storage temperature	-20°C to +85°C



BMF House - Wight Moss Way,  
Southport Business Park  
Southport PR8 4HQ  
ENGLAND

united automation

unitedautomationltd UA\_Limited



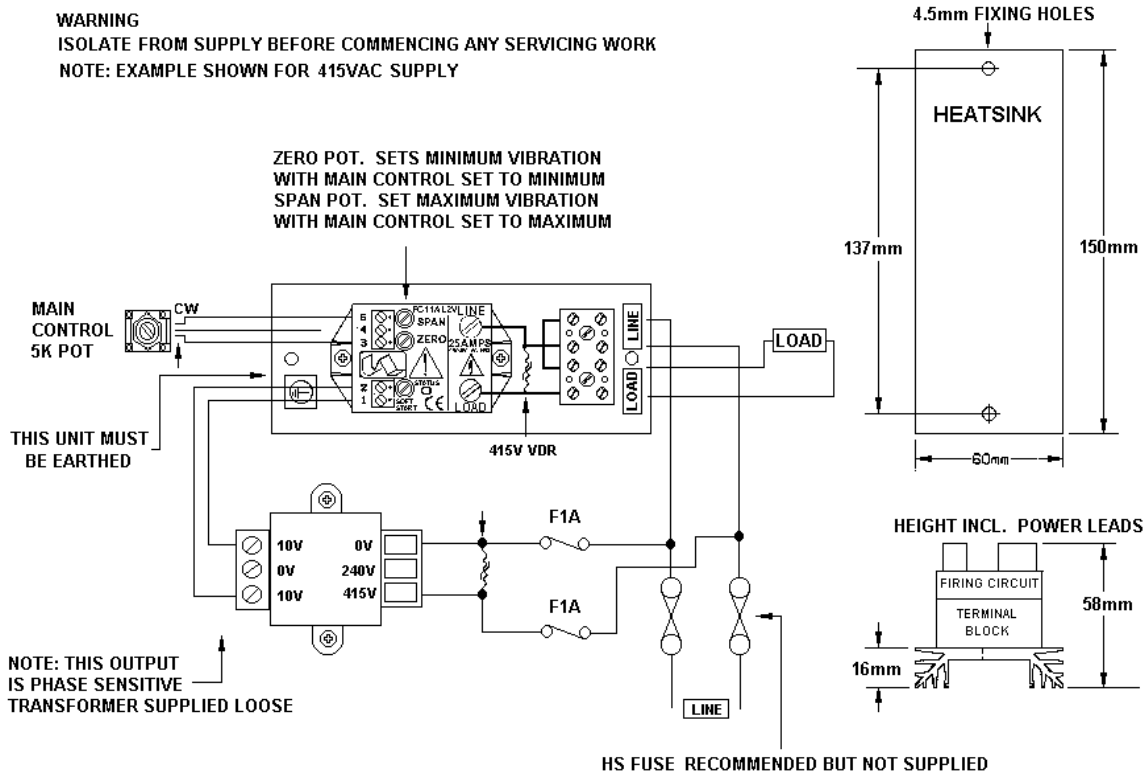
# UV11/D

230v, 415v

Dual Voltage Half-Wave Vibrator Controller

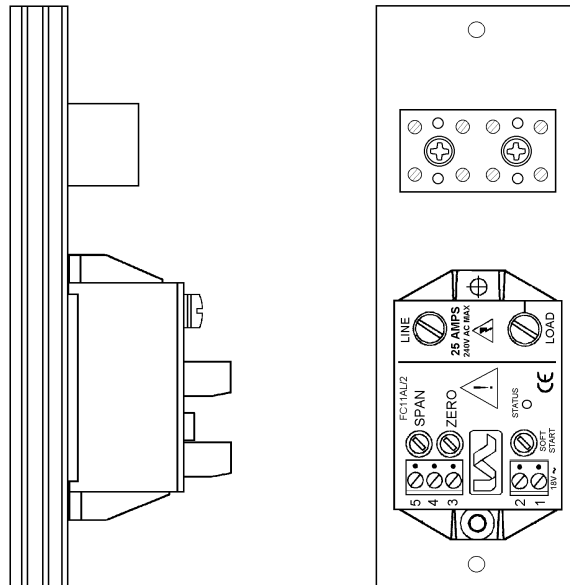
## INSTALLATION

**WARNING**  
ISOLATE FROM SUPPLY BEFORE COMMENCING ANY SERVICING WORK  
NOTE: EXAMPLE SHOWN FOR 415VAC SUPPLY



## COOLING REQUIREMENTS

THIS UNIT SHOULD BE MOUNTED VERTICALLY TO AID AIR FLOW



BMF House - Wight Moss Way,  
Southport Business Park  
Southport PR8 4HQ  
ENGLAND



# UV11/D

230v, 415v

Dual Voltage Half-Wave Vibrator Controller

## RECOMMENDATIONS

### FUSING

It is recommended to use semiconductor (fast acting) type fuses or circuit breakers (Semiconductor - MCB) for unit protection. On initial 'switch on' some loads may need an increased factor of safety (F of S) for unit and/or device protection. (See SRA Datasheet for further information).

### CE Marking

This product family carries a "CE" marking. These burst firing type controllers do not require a filter. For information see recommendation section and contact our sales desk. See the Declaration of Conformity.

## DOCUMENTS

Other documents available on request, which may be appropriate for your application:

Code	Identity	Description
X10229	RFI	Filtering Recommendations: Addressing the EMC Directive
X10213	ITA	Interaction: Uses for phase angle and for burst fire control
X10255	SRA	Safety Requirements: Addressing the Low Voltage Directive (LVD) including, Thermal Data/Cooling, Live Parts Warning, Earthing Requirements and Fusing Recommendations
P01.1	COS	UAL Conditions of Sale

It is recommended that installation and maintenance of this equipment should be done with reference to the current edition of the I.E.T. regulations (BS7671) by suitably qualified/trained personnel. The regulations contain important requirements regarding the safety of electrical equipment. For International standards refer STANDARDS on D of C.

## PRODUCT CODE AND RELATED PRODUCT CODE

Product Code	Product Description
A53732	UV11/D 240/415V



BMF House - Wight Moss Way,  
Southport Business Park  
Southport PR8 4HQ  
ENGLAND

