



This single-phase firing module with integral 26A triac, uses variable phase angle control with adjustable signal matching and selectable soft-start. The power supply transformer is remote for increased reliability and wide operational voltage capabilities. The FC11AL/2 controller governs the amount of power supplied to the load, by controlling the AC supply. A ramp and pedestal input circuit, allowing variation of firing phase angle by DC signal, enables more power through to the load with increasing angle.

APPLICATIONS

- Ovens
- Fish & Chips
- Restaurant's
- Hospitality
- Quartz Lamps / Heat Lamps
- Moulders
- Dryers and
- Some inductive loads,
for example transformers and motors



FEATURES

- Integral 26A triac.
- Wide range of control signal inputs(voltage or current).
- Selectable soft start signal delay function,(Terminals 6 & 7)
- Status LED giving output level indication.
- Consumes under 2 Watts.

TECHNICAL SPECIFICATIONS

Signal Span minimum	0-2v dc
Signal span maximum	0-25V dc
Signal zero offset	0-30% of span
Signal input resistance	5000 ohms \pm 20%
Manual potentiometer	2K, 5K or 10K
I ² t for fusing (10m sec)	250 A ² s
Soft start time constant	0.06 sec/microfarad
Isolation voltage	2500 Vrms
Max. Working temperature	65°C operational
AC input power (1 & 2)	18 to 24V ac @ 65mA
Auxiliary output (5)	5Vdc @ 5mA protected
Triac limiting RMS current	26A
AC line voltage +/- 10% @ 50/60 Hz	25v to 230V
Peak single cycle surge current	250A
Power consumption	1.7W
Max. Peak voltage	600V
Current rating	25A



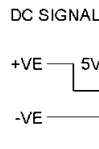
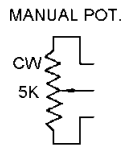
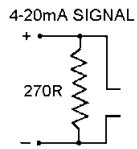
FC11AL/2

Storage temperature

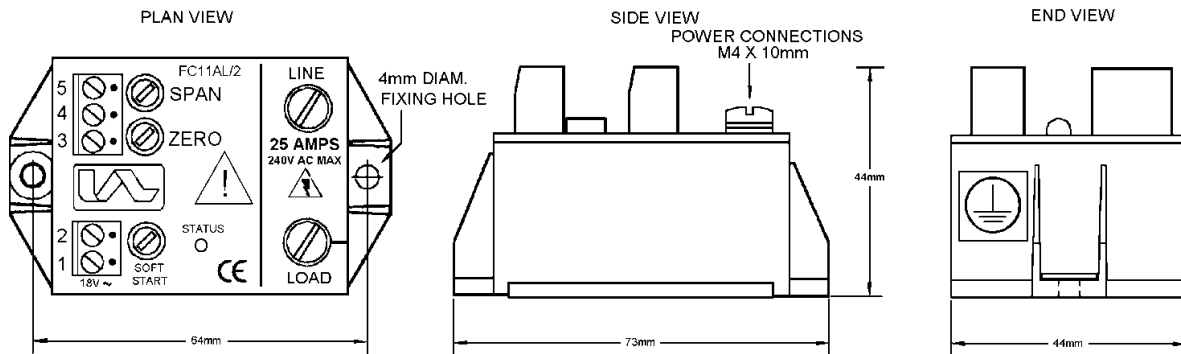
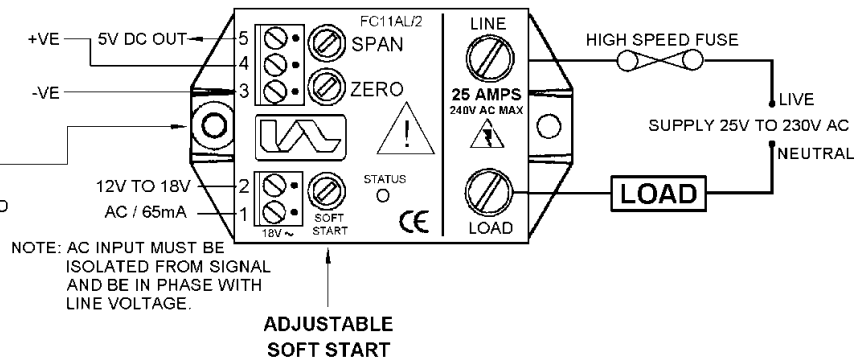
-20°C to +85°C

Installation

CONTROL OPTIONS FOR TERMINALS 3,4 AND 5

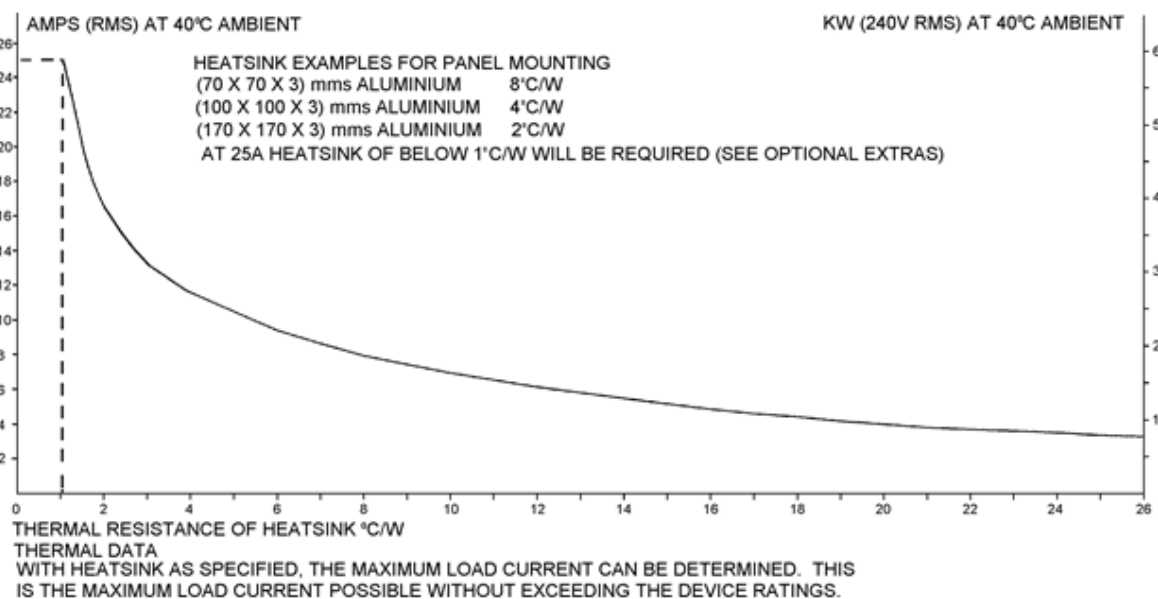


WARNING
THIS UNIT MUST BE EARTHED



USE HEATSINK COMPOUND FOR EFFECTIVE THERMAL COUPLING
WARNING LIVE TERMINALS
SWITCH OFF MAINS SUPPLY BEFORE COMMENCING ANY SERVICE WORK

Cooling Requirements





FC11AL/2

FUSING

It is recommended to use semiconductor (fast acting) type fuses or circuit breakers (Semiconductor - MCB) for unit protection. On initial switch on some loads may need an increased Factor of Safety (F of S) for unit and/or device protection. See SRA datasheet for information.

Recommendations

Other documents available on request, which may be appropriate for your application: -

Code	Identity	Description
X10229	RFI	Filter recommendations: Addressing the EMC Directive
X10213	ITA	Interaction: Uses for phase angle and for burst fire control
X10255	SRA	Safety Requirements: Addressing the Low Voltage Directive (LVD) including, Thermal Data/Cooling, Live Parts Warning, Earthing Requirements and Fusing Recommendations

It is recommended that installation and maintenance of this equipment should be done with reference to the current edition of the I.E.T. regulations (BS7671) by suitably qualified/trained personnel. The regulations contain important requirements regarding the safety of electrical equipment. For International standards refer STANDARDS on D of C.

OPTIONAL EXTRAS

Product Code	Product Description
A-EN2010-30-S	RFI Filter
T30201	Supply Transformer
Z01062	Heatsink Compound Syringe (Must be applied while fitting)
Note: When ordering a filter, the current at which the FC11AL/2 is to be used at will be required.	

PRODUCT CODE AND RELATED PRODUCT CODE

Product Code	Product Description
A31217	Phase Angle Power Module