



**STOM2 - 10V to 440V**

The STOM2 is a microprocessor-based trigger module capable of driving most power thyristors. The STOM2 has two modes of triggering control, phase-angle and burst-firing can be selected separately. The module can also be used for soft-starting in phase-angle mode and it will automatically switch to burst-fire mode when the control signal has reached a preset level. The STOM2 has a soft start from power up which can be set from 0-30 seconds. The signal inputs are fully isolated operating from either 0-5V dc or 4-20mA - accepting signals from temperature controllers, manual potentiometers, microprocessors etc.

**APPLICATIONS**

- Ovens
- Fish & Chips
- Restaurant's
- Hospitality
- Quartz Lamps / Heat Lamps
- Moulders
- Dryers and
- Some inductive loads,  
for example transformers and motors



**FEATURES**

- Energy Saving.
- Energy saving
- Soft-start facility
- Phase-angle or burst-firing.
- Simple wiring
- Standard 80mm fixing.
- Solid-state reliability
- Isolated inputs
- Rugged and compact
- Load status indicator

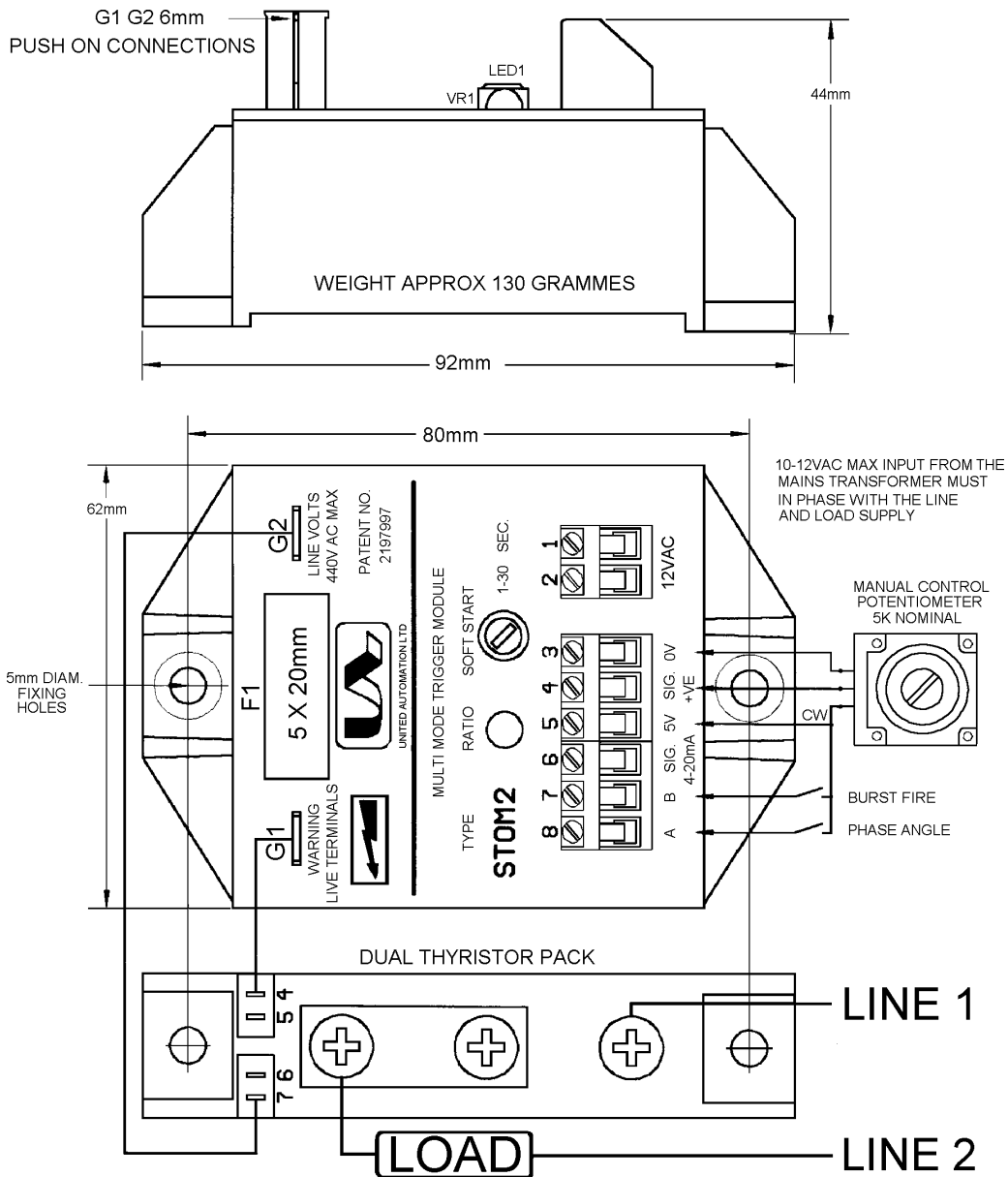
**TECHNICAL SPECIFICATIONS**

Minimum Line Voltage	5V ac
Maximum Line Voltage	440V ac
Control Signals	0-5V dc & 4-20mA
Operating Frequency	50 to 60 Hz ± 5%
Supply Voltage	10-18V ac
Operating temp.	0 to 65°C
Storage temp.	0 to +85°C
Mono-link fuse	F100mA (HRC)
Soft Start	1-30 sec
Max. electrical isolation	4kV ac
Power consumption	1.2W
Trigger output rating	1A
Auxiliary output	5V dc
Gate terminals	6.3mm x 0.8mm



**STOM2 - 10V to 440V**

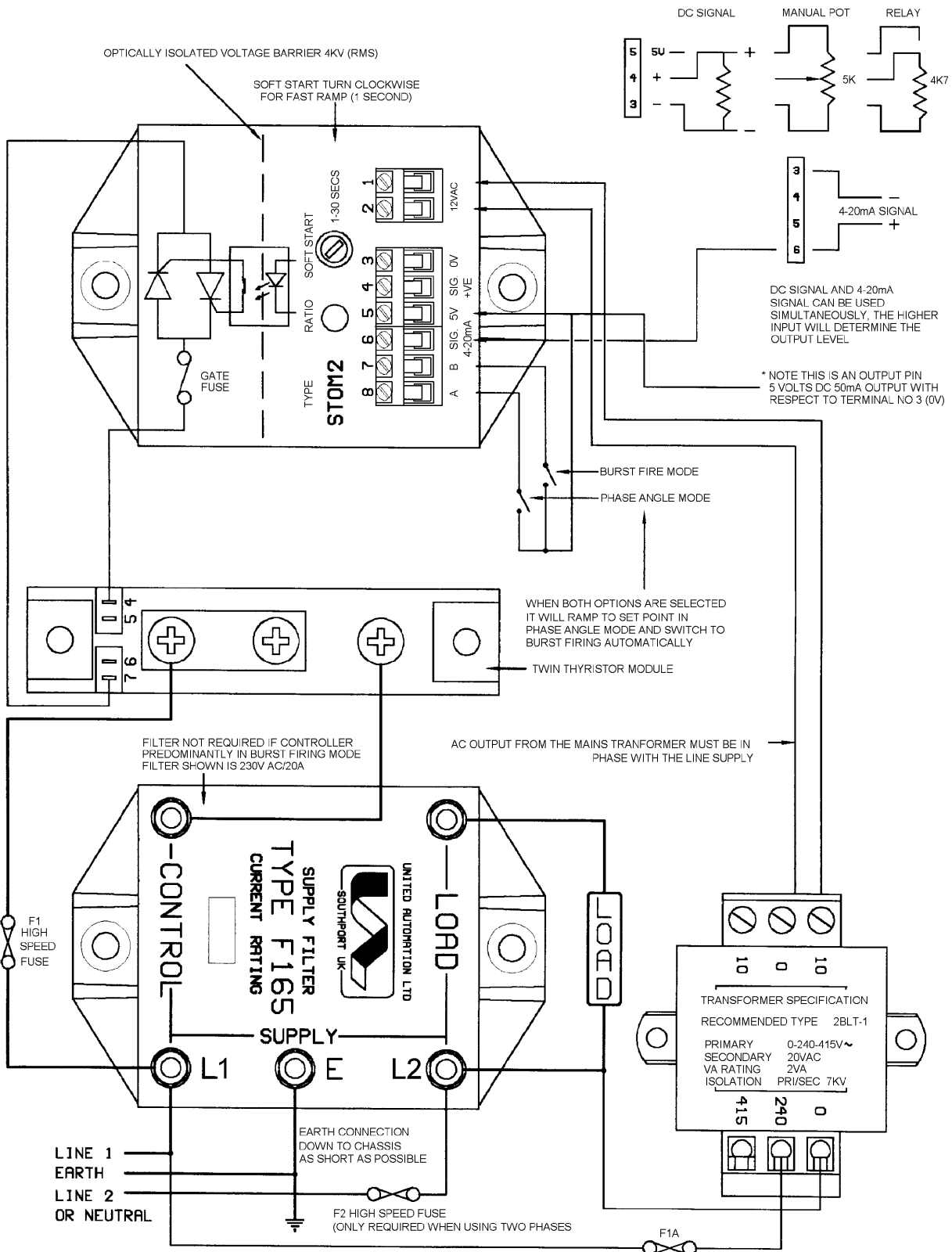
**Installation**



- CONTROL OPTIONS**
- DC INPUT**
- VOLTAGE CONTROL**  
 TERMINALS 3,4 AND 5
- 3 = 0V
  - 4 = 0 TO 5V
  - 5 = 5V OUTPUT
  - 5K INPUT
- CURRENT CONTROL**  
 TERMINALS 3 AND 6
- 3 = 0V
  - 6 = 4-20mA
  - 240R INPUT

- MODE A PHASE ANGLE**  
 TERMINAL A AND 5
- A = 5V
  - 5 = 5V
- MODE B BURST FIRE**  
 TERMINALS B AND 5
- B = 5V
  - 5 = 5V
- MODE A AND B START IN**  
 PHASE ANGLE SWITCHING  
 TO BURST FIRE
- TERMINAL A,B AND 5**
- A = 5V
  - B = 5V
  - 5 = 5V

- PHASE REFERENCE AND**  
**SUPPLY TERMINALS 1 AND 2**
- 10V TO 18V AC AT 75 mA
- OUTPUT CONNECTIONS G1, G2**
- UP TO 440V ac MAX
  - 50 TO 60 Hz +/- 5
  - GATE CURRENT 1A MAX



MATCH MAINS SUPPLY FILTER TO THE SUPPLY VOLTAGE AND MAX. LOAD CURRENT IN ORDER TO COMPLY WITH BSEN 550081-2 WHEN USED IN PHASE ANGLE MODE



**STOM2 - 10V to 440V**

## FUSING

It is recommended to use semiconductor (fast acting) type fuses or circuit breakers (Semiconductor - MCB) for unit protection. On initial switch on some loads may need an increased Factor of Safety (F of S) for unit and/or device protection. See SRA datasheet for information.

## Recommendations

Other documents available on request, which may be appropriate for your application: -

Code	Identity	Description
X10229	RFI	Filter recommendations: Addressing the EMC Directive
X10213	ITA	Interaction: Uses for phase angle and for burst fire control
X10255	SRA	Safety Requirements: Addressing the Low Voltage Directive (LVD) including, Thermal Data/Cooling, Live Parts Warning, Earthing Requirements and Fusing Recommendations

It is recommended that installation and maintenance of this equipment should be done with reference to the current edition of the I.E.T. regulations (BS7671) by suitably qualified/trained personnel. The regulations contain important requirements regarding the safety of electrical equipment. For International standards refer STANDARDS on D of C.

## OPTIONAL EXTRAS

Product Code	Product Description
A-EN2010-30-S	RFI Filter
T30201	Supply Transformer
Z01062	Heatsink Compound Syringe <b>(Must be applied while fitting)</b>

**Note:** When ordering a filter, the current at which the STOM2 is to be used, will be required.

## PRODUCT CODE AND RELATED PRODUCT CODE

Product Code	Product Description
A34512	Single Phase Dual Mode Firing Circuit