



This single phase or phase to phase firing module uses variable phase-angle control with adjustable signal matching and adjustable soft-start. The power transformer is remote for increased reliability and wide operational voltage capacity.

The unique \*MONO-LINK firing system is ideal for use with inductive loads and requires minimal wiring to the power devices. The module is fully enclosed for safety and eligibility in industrial environments.

### APPLICATIONS

- Ovens
- Fish & Chips
- Restaurant's
- Hospitality
- Quartz Lamps / Heat Lamps
- Moulders
- Dryers and
- Some inductive loads,  
for example transformers and motors



### FEATURES

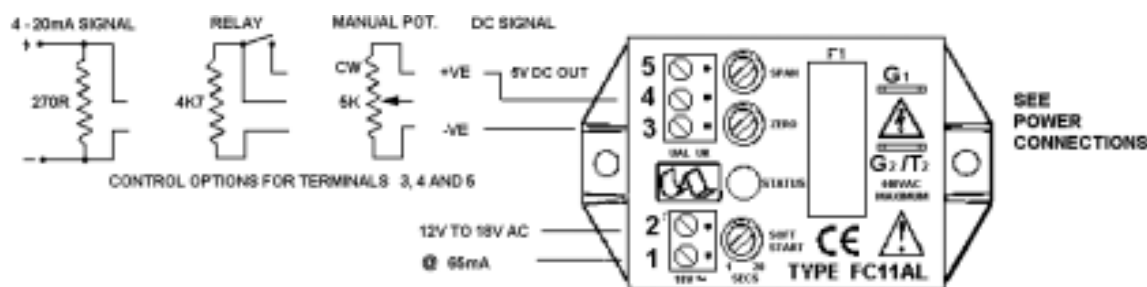
- Fires triacs or thyristors up to 440V (50/60 Hz) supplies.
- MONO-LINK<sup>®</sup> - Gate to Gate firing.
- High Isolation opto-coupled output.
- Status LED giving output level indication.
- Adjustable Soft Start Function.

### TECHNICAL SPECIFICATIONS

Signal Span Minimum	0 to 2V dc
Signal Span Maximum	0 to 25V dc
Signal zero offset	0 to 30% of span
dV/dt rating	100V/□s
Max. Gate/Line voltage	440V ac
Trigger isolation voltage	4000Vrms
Trigger output rating	0.8A
Storage temperature range	-20 to +85□C
AC input supply	12 to 18V ac @ 65mA
Auxiliary output	5V dc
Line Frequency	50/60 Hz
Operating temperature range	0 to +65□C
Adjustable soft start	0-20 seconds
Mono-link fuse	F100mA (HRC)
Manual potentiometer	2K, 5K or 10K
Power connections	6.3mm Amp tags

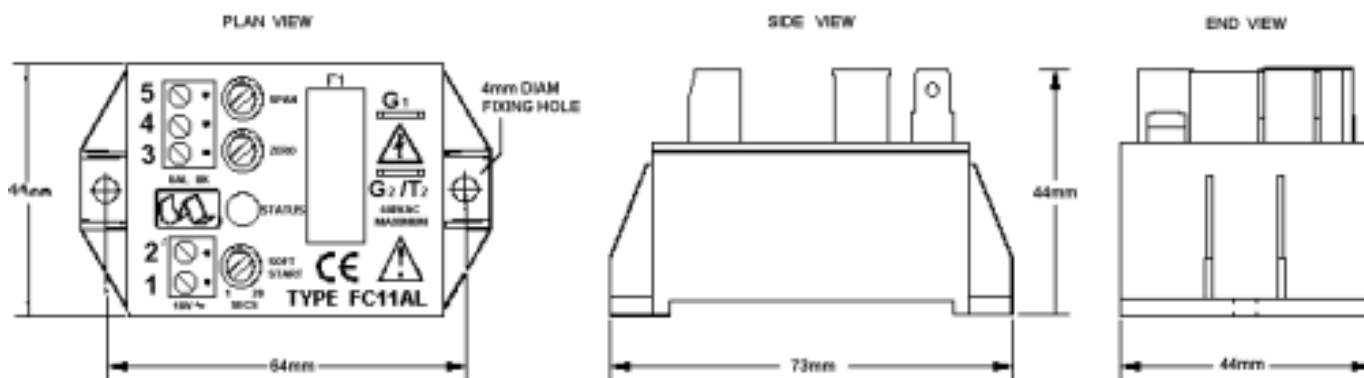


### Installation



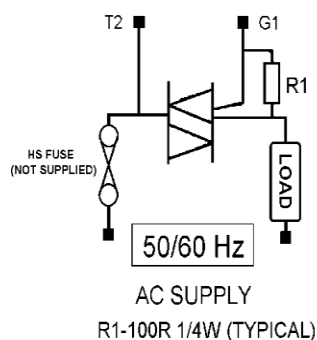
**WARNING :** - ENSURE THE UNIT IS DE-ENERGISED BEFORE REPLACING FUSES, OR WHEN NOT IN USE

**NOTE:-** 12V TO 18V AC INPUT MUST BE ISOLATED FROM SIGNAL AND BE IN PHASE WITH LINE VOLTAGE

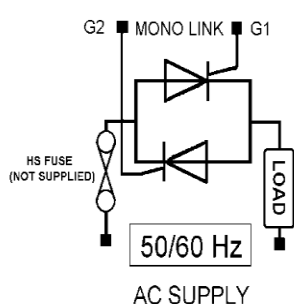


### Power Connections

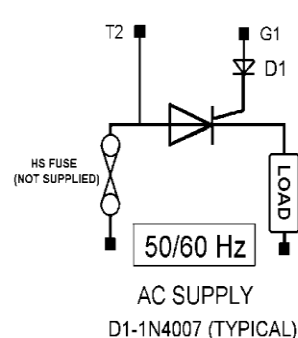
FULL WAVE TRIAC



FULL WAVE THYRISTOR



HALF WAVE VIBRATOR





## FC11AL

### FUSING

It is recommended to use semiconductor (fast acting) type fuses or circuit breakers (Semiconductor - MCB) for unit protection. On initial switch on some loads may need an increased Factor of Safety (F of S) for unit and/or device protection. See SRA datasheet for information.

### Recommendations

Other documents available on request, which may be appropriate for your application: -

Code	Identity	Description
X10229	RFI	Filter recommendations: Addressing the EMC Directive
X10213	ITA	Interaction: Uses for phase angle and for burst fire control
X10255	SRA	Safety Requirements: Addressing the Low Voltage Directive (LVD) including, Thermal Data/Cooling, Live Parts Warning, Earthing Requirements and Fusing Recommendations

It is recommended that installation and maintenance of this equipment should be done with reference to the current edition of the I.E.T. regulations (BS7671) by suitably qualified/trained personnel. The regulations contain important requirements regarding the safety of electrical equipment. For International standards refer STANDARDS on D of C.

### OPTIONAL EXTRAS

Product Code	Product Description
A-EN2010-30-S	RFI Filter
T30201	Supply Transformer
Z01062	Heatsink Compound Syringe ( <b>Must be applied while fitting</b> )
<b>Note:</b> When ordering a filter, the current at which the FC11AL/2 is to be used at will be required.	

### PRODUCT CODE AND RELATED PRODUCT CODE

Product Code	Product Description
A31214	Single phase Phase Angle Firing Circuit