



This burst-fire control module incorporates the unique MONO-LINK<sup>®</sup>, gate-to-gate, firing feature, which uses single-path hard firing for each phase thyristor pair, eliminating cathode firing connections. The zero-crossing triggered output has a variable on/off ratio, which is proportional to the manual control signal or dc input demand signal. Phase timing problems are eliminated, as the opto-isolated output driver stage is self-timing from the associated power device connections. The burst-firing circuit prevents fast changes in current thus inhibiting radio frequency interference.

## APPLICATIONS

- Ovens
- Fish & Chips
- Restaurant's
- Hospitality
- Quartz Lamps / Heat Lamps
- Moulders
- Dryers and
- Some inductive loads,  
for example transformers and motors



## FEATURES

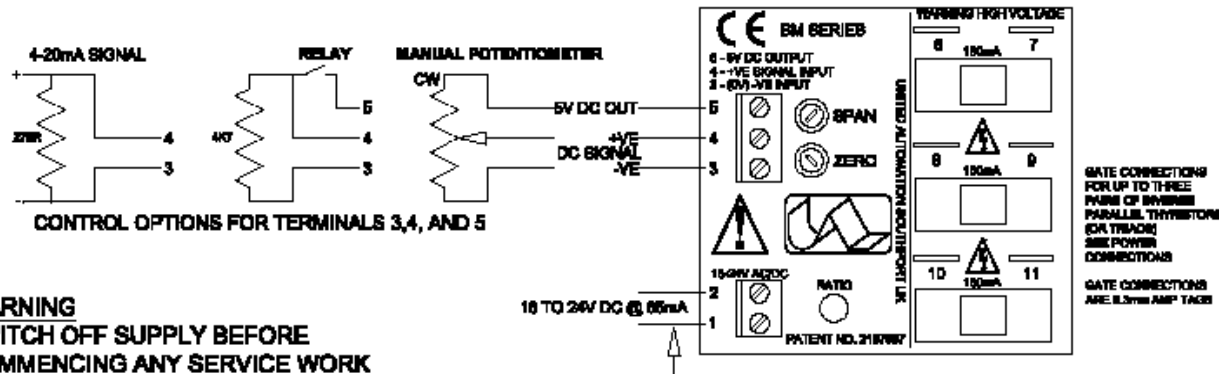
- Fires triacs or thyristors up to 440V (50/60Hz) supplies
- **MONO-LINK™** gate-to-gate firing
- No phase timing or matching required
- Zero voltage switching (RFI free).
- Status LED giving output ratio indication.
- High isolation opto-coupled output.

## TECHNICAL SPECIFICATIONS

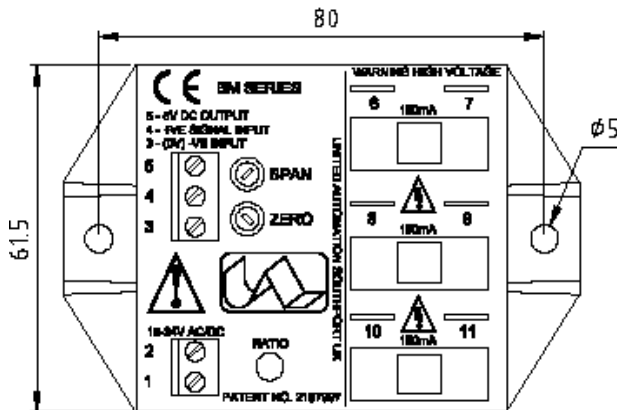
Signal span minimum	0 to 2V dc
Signal span maximum	0 to 25V dc
Signal zero offset	0 to 30% of span
dv/dt rating	100V/□s
Max. gate/line voltage	440V ac
Trigger isolation voltage	2500V rms
Trigger output rating	0.8A
Storage temperature	20°C to +85°C
ac input supply	18 to 24V ac/dc @ 65mA
Auxiliary output	5V dc @ 5mA protected
Line frequency	50/60 Hz
Max. ambient temperature	65°C operational
Cycle time base nominal	1 second
Mono-Link fuse	F100mA (HRC)
Manual potentiometer	2, 5 or 10kΩ
Power connections	6.3mm Amp tags



## Installation



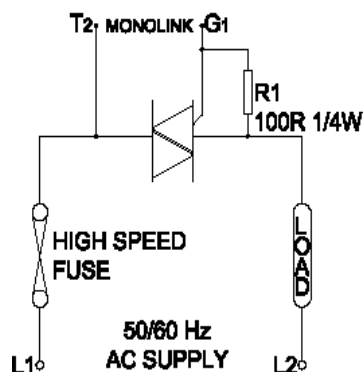
NOTE  
THIS SUPPLY MUST BE ISOLATED  
FROM THE SIGNAL



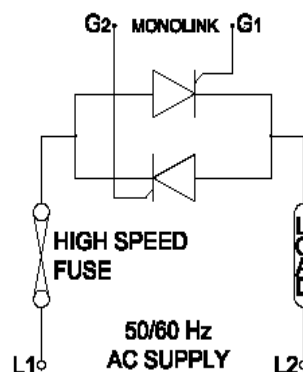
MONOLINK IS A TRADEMARK OF UNITED AUTOMATION LTD. PATENT NO. 2197997

## POWER CONNECTIONS

### FULL WAVE TRIAC



### FULL WAVE THYRISTOR





## BM 1 / 2 / 3

### FUSING

It is recommended to use semiconductor (fast acting) type fuses or circuit breakers (Semiconductor - MCB) for unit protection. On initial switch on some loads may need an increased Factor of Safety (F of S) for unit and/or device protection. See SRA datasheet for information.

### Recommendations

Other documents available on request, which may be appropriate for your application: -

Code	Identity	Description
X10229	RFI	Filter recommendations: Addressing the EMC Directive
X10213	ITA	Interaction: Uses for phase angle and for burst fire control
X10255	SRA	Safety Requirements: Addressing the Low Voltage Directive (LVD) including, Thermal Data/Cooling, Live Parts Warning, Earthing Requirements and Fusing Recommendations

It is recommended that installation and maintenance of this equipment should be done with reference to the current edition of the I.E.T. regulations (BS7671) by suitably qualified/trained personnel. The regulations contain important requirements regarding the safety of electrical equipment. For International standards refer STANDARDS on D of C.

### OPTIONAL EXTRAS

Product Code	Product Description
T30201	Supply Transformer
Z01062	Heatsink Compound Syringe <b>(Must be applied while fitting)</b>
<b>Note:</b> When ordering a filter, the current at which the FC11AL/2 is to be used at will be required.	

### PRODUCT CODE AND RELATED PRODUCT CODE

Product Code	Product Description
A32411	BM1 – Three Phase Burst Fire Firing Circuit
A32413	BM2 – Three Phase Burst Fire Firing Circuit
A32414	BM3 – Three Phase Burst Fire Firing Circuit